

# PLD Specifications

## General Dimensions:

Available in inside lengths of 12', 14' and 16" inside width with 18" sides, 42" front and 24" gate.

## Sides:

10 Gauge high tensile steel sides with horizontal pressed V brace, material shedding boxed top rails, full depth 10" rear corner post and 6" front and rear board extension pockets. Drop sides do not have pressed V brace.

## Floor:

10 gauge high tensile steel, with 2" radius floor to side radius.

## Front Bulkhead:

10 gauge high tensile steel construction with two bend top flange and horizontal V brace.

## Tailgate:

10 gauge high tensile steel with full perimeter box bracing, two intermediate vertical box braces, double acting with long chains and two sets of banjo eyes.

## Tailgate Hardware:

Heavy duty cast quick release top hardware and cast overshot lower hardware with manual release handle.

## LED Lights:

Meets all requirements of FMVSS108 with oval stop/tail/turn lights recessed in rear post. All lighting is recessed, shock mounted, complete with factory wiring harness.

## Understructure:

Stacked design utilizing 7" structural longitudinals gusseted to 3" structural channel crossmembers on 12" centers, lubricated front and rear cross shaft and full width rear bolster.

## Safety Features:

All Galion PLD bodies with hoists are shipped with a "body up" warning light and OSHA required back up alarm.

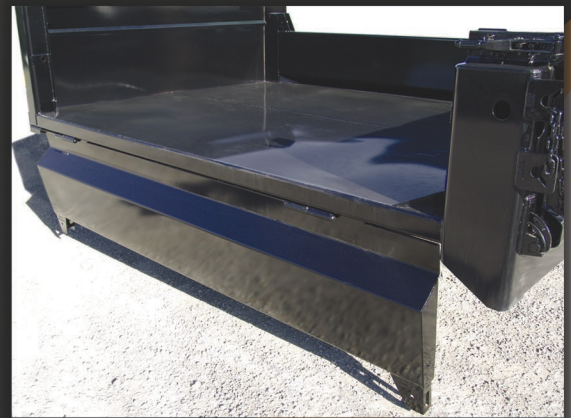
## Paint:

Glossy black powder coating on top of Zinc powder primer.

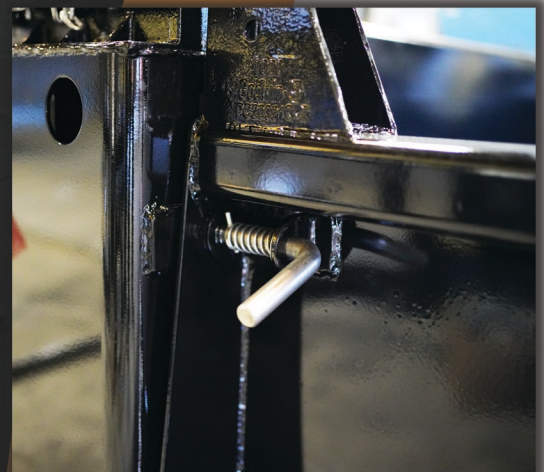
## Options:

Stainless steel construction options  
Upgraded steel or stainless gauges  
1-piece floor of material choice  
Crossmemberless  
7" Longsill understructure  
Trapezoid I-beam 8"  
Coal door in gate  
Stainless cross shaft  
Single release tailgate hardware  
Fold down sides (14' & 16' have double drop side)  
Bolt on spreader apron  
Integral cab protector

Galion-Godwin Truck Body Co. LLC.  
7415 Peabody-Kent Rd.  
Dundee OH, 44624  
(877) 450-4794



Pictured is a view of the 12' PLD drop side option. With the release of the two independent spring latches the side folds down below the floor. The 14' and 16' dropsides are split. (two sections each side)

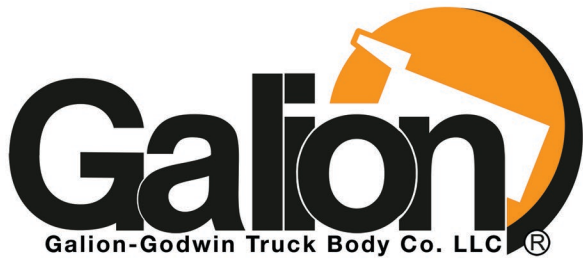


Optional dropside with double spring pins. Side drops well below deck level for easy clean out.



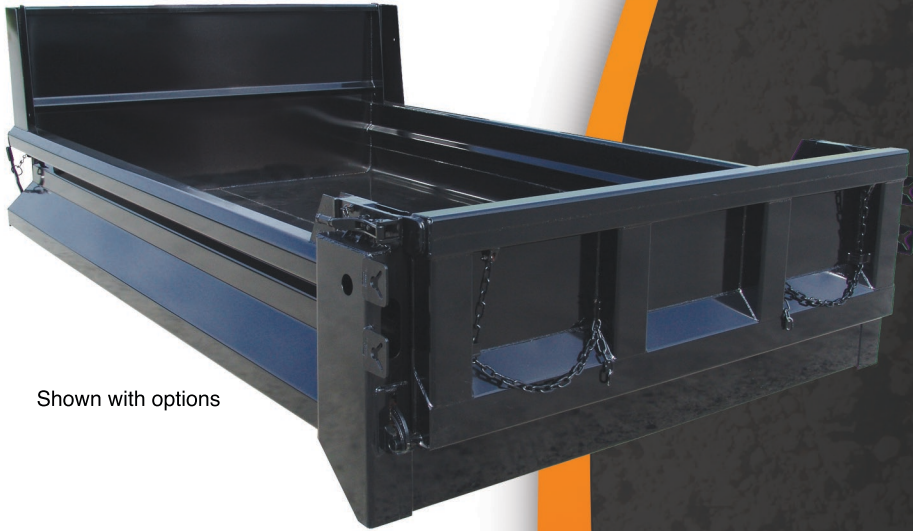
Quick release upper hardware and chain locking banjo eyes are standard on the PLD





Galion-Godwin Truck Body Co. LLC®

*The Oldest Name in Dump Bodies*



Shown with options



A 23" cab protector is a popular option on the PLD body

#### Full Factory Warranty

Complete parts and service available through nationwide authorized distributors

[www.GalionGodwin.com](http://www.GalionGodwin.com)

Proud Affiliate of The Godwin Group



## PLD Series Dump Bodies

The Galion PLD body is designed for superior service on 12000 - 26000 GVWR cab/chassis'. It features all 10 gauge high tensile steel floors, tailgate, head sheets and single V brace sides. 10" full depth rear corner posts and boxed "material-shedding" top rails are also standard. The PLD is designed to operate with scissor type conversion hoists.

- Available in lengths of 12', 14' and 16'
- For 12000 - 26000 GVWR cab/chassis
- Material shedding boxed top rails
- Double acting tailgate
- 10 gauge high tensile construction throughout
- 3" crossmember understructure
- 3-panel tailgate
- Quick release upper tailgate hardware
- Horizontal V braced sides

