

100U & 103U Specifications

General Dimensions:

Available in inside lengths from 8' through 11'-6", 84" inside width with 13" sides and 19" gate or 18" sides and 24" gate.

Sides:

10 Gauge high tensile steel with material shedding boxed top rails, full depth 10" rear corner post, front side brace, two intermediate vertical side braces and 6" front and rear board extension pockets.

Floor:

10 gauge high tensile steel 1 pc with 2" formed in place floor to side radius.

Front Bulkhead:

10 gauge high tensile steel construction with two bend top flange.

Tailgate:

10 gauge high tensile steel. 3 panel design with full perimeter box bracing, double acting design with long chains and two sets of banjo eyes.

Tailgate Hardware:

Heavy duty cast quick release top hardware and cast overshot lower hardware with manual release handle. All stainless on 103U.

LED Lights:

Meets all requirements of FMVSS108 with oval stop/tail/turn lights recessed in rear post. All lighting is recessed, shock mounted, complete with factory wiring harness.

Understructure:

Stacked design utilizing 6" structural longitudinals gusseted to 3" structural channel crossmembers on 12" centers, lubricated front and rear cross shaft and full width rear bolster.

Safety Features:

All complete Galion 100U and 103U bodies with hoists are shipped with a "body up" warning light and OSHA required back up alarm.

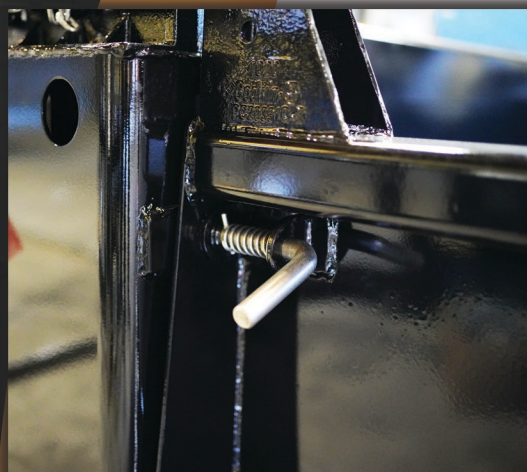
Options:

304 #4 stainless steel construction
304-2B stainless steel construction
201-LN2B stainless steel construction
201 #4 stainless steel construction
Upgrade steel or stainless gauges
1-piece 3/16" floor of material choice
Coal door in gate
Single release tailgate hardware
Stainless cross shaft
Fold down sides
Bolt on spreader apron
Integral cab protector
Hoist options

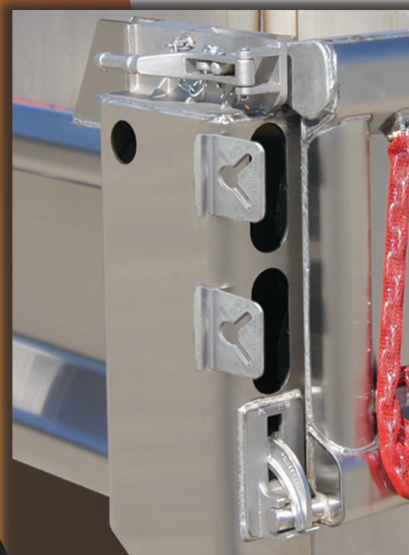
Galion-Godwin Truck Body Co. LLC.
7415 Peabody-Kent Rd.
Dundee OH, 44624
(877) 450-4794



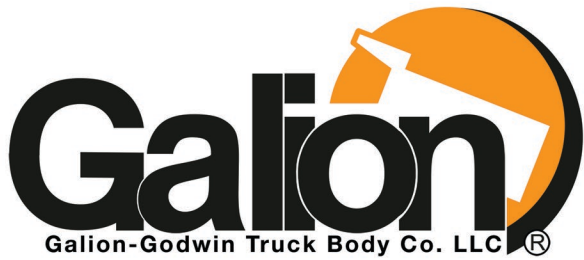
Pictured is a close view of the upper quick release hardware. This hardware makes it easy to quickly remove and reinstall the tailgate.



Optional dropside with double spring pins. Side drops well below deck level for easy cleanout.



All hardware is stainless steel on the 103U body

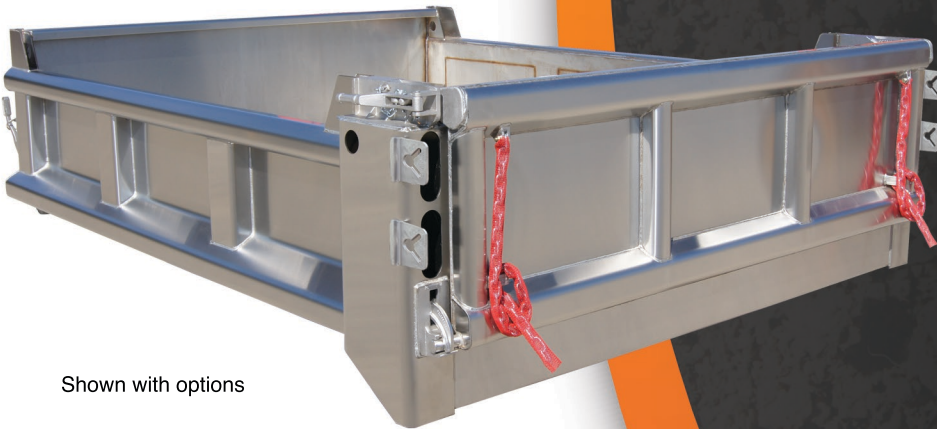


Galion-Godwin Truck Body Co. LLC®

The Oldest Name in Dump Bodies



Shown with options



Shown with options

Full Factory Warranty

Complete parts and service available through nationwide authorized distributors

www.GalionGodwin.com

Proud Affiliate of The Godwin Group



100U & 103U Series Dump Bodies

The Galion 100U & 103U bodies are designed for superior service on 9900 - 19500 GVWR cab/chassis'. The 100U features all 10 gauge high tensile steel floors, tailgate, head sheets, and sides, while the 103U is constructed with 10 gauge stainless steel. Front corner posts, two intermediate side braces, full depth rear corner posts and boxed "material-shedding" top rails are also standard.

- Available in lengths of 8' to 11'-6"
- For 9,900 - 19,500 GVWR cab/chassis
- Material shedding boxed top rails
- Double acting tailgate
- 10 gauge high tensile construction throughout
- 3" crossmember understructure
- 3-panel tailgate
- Zinc thermoset primer with powder coated top coat

