

500U/T Dump Body

*A continued tradition
since the early 1900's*

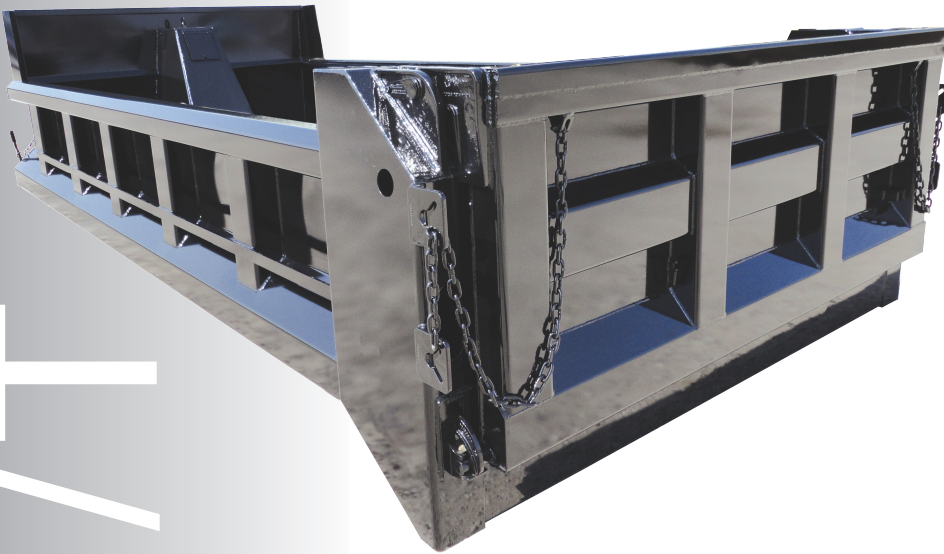


Tough & Versatile

The Galion 500U/T is excellent for over-the-highway aggregate hauling. Ideal for construction and batching work, and for hauling and spreading stone, sand, gravel and other aggregates. Galion 500U/T series bodies utilize high tensile steel throughout for best resistance to abrasion. Known the world over, Galion bodies provide the ultimate in dump body engineering, longer life and maximum performance.



- Available in 12'- 17' lengths
- Material-shedding boxed top rails
- 8 gauge high tensile floor and tailgate
- 10 gauge high tensile sides and front
- 6-panel tailgate
- Tarp-friendly upper gate hardware
- Full-depth rear corner posts



A 24" cab protector is one of many options available on the 500U/T.

Visit Galion and all affiliated companies on the world wide web.
www.galiongodwin.com



500U/T